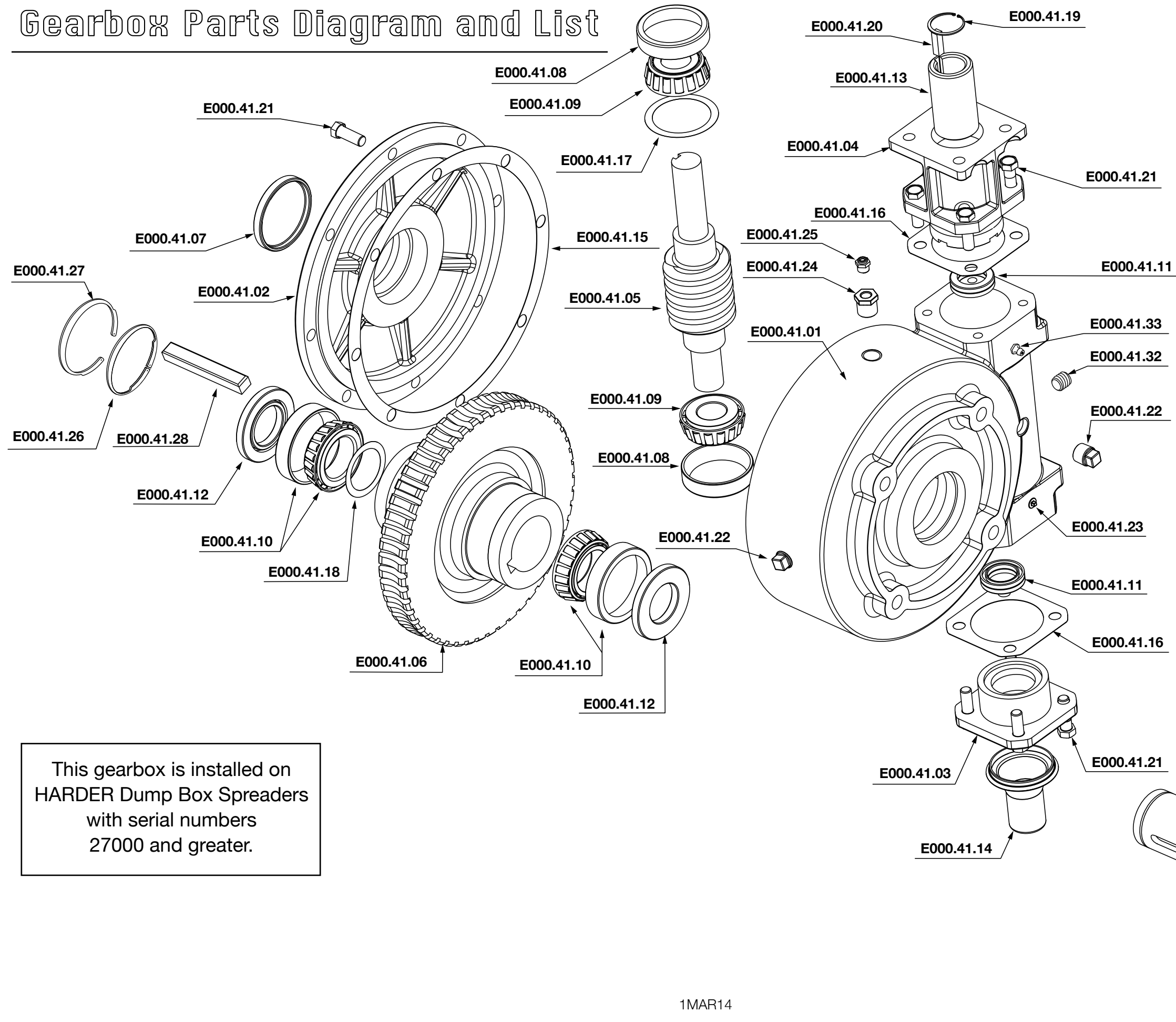


Gearbox Parts Diagram and List



Harder Part Number	Description	Qty.
E000.41.01	Housing	1
E000.41.02	Cover, Output	1
E000.41.03	Endcap	1
E000.41.04	Hydraulic Adapter	1
E000.41.05	Shaft, Input Worm	1
E000.41.06	Gear, Wheel	1
E000.41.07	Cover, Cap	1
E000.41.08	Bearing, Input Cup	2
E000.41.09	Bearing, Input Cone	2
E000.41.10	Bearing, Output Cup/Cone	2
E000.41.11	Seal, Input	4
E000.41.12	Seal, Output	2
E000.41.13	Coupler	1
E000.41.14	Guard, Shaft	1
E000.41.15	Gasket, Cover	1
E000.41.16	Gasket, Input	2
E000.41.17	Shim, Input	AR
E000.41.18	Shim, Output	AR
E000.41.19	Retaining Ring	1
E000.41.20	Key	1
E000.41.21	Bolt 3/8-16 x 1.00	16
E000.41.22	Sq. Head Plug, 3/8-18 NPT	3
E000.41.23	Sq. Head Plug, 1/8-27 NPT	1
E000.41.24	Bushing, 3/8-18 X 1/8-27	1
E000.41.25	Plug, 5 PSI	1
E000.41.26	Retaining Ring, External	1
E000.41.27	Retaining Ring, Internal	1
E000.41.28	Key	1
E000.41.30	Shaft, Output, Carbon Steel	1
E000.41.32	Hex Socket Plug, 3/8-18 NPT	1
E000.41.33	Grease Fitting, 1/8-27 NPT	1

This gearbox is installed on HARDER Dump Box Spreaders with serial numbers 27000 and greater.